

PRIME SUBLEASE OPPORTUNITY IN SOUTHWEST WINNIPEG

UNIT 206 - 1020 LORIMER BLVD



Ryan Munt
Executive Vice President

Ryan Munt Personal Real Estate Corporation
T 204 928 5015
C 204 298 1905
ryan.munt@cwstevenson.ca

Chris Macsymic
Executive Vice President & Principal

Chris Macsymic Personal Real Estate Corporation
T 204 928 5019
C 204 997 6547
chris.macsymic@cwstevenson.ca

PROPERTY HIGHLIGHTS

AVAILABLE SF: (+/-) 2,906 SF

Located in one of Winnipeg's most desirable districts, this office space offers exceptional accessibility to Linden Woods, River Heights, Tuxedo, and the Outlet Collection Winnipeg. It is also just a short 15-minute drive to both the Winnipeg James Armstrong Richardson International Airport and the Downtown core. The area's demographics and amenities make it highly attractive for medical, professional, and general office users.

Exceptional Location & Surrounding Amenities

- Positioned at the tripoint of River Heights, Linden Woods, and Tuxedo—three of the most affluent and densely populated neighbourhoods in the city.
- Surrounded by strong retail corridors, allowing visitors to easily pair appointments with shopping, errands, and dining.
- Close to major thoroughfares, providing seamless access for clients, staff, and patients.
- Nearby transit routes offer convenient public transportation options.

Ideal for Medical and Professional Use

- Established medical tenant base already in the building, enhancing visibility and referral potential.
- Layout and natural lighting support a comfortable, patient-friendly environment.
- Strong surrounding demographics make the location well-suited for clinics, wellness practices, and professional service providers.

Building Features & On-Site Advantages

- Abundant natural light throughout the premises.
- Surface and underground parking available for both staff and visitors.
- The property sits on more than 2 acres, providing ease of access, good traffic flow, and a welcoming campus-style environment.
- Shell condition. Opportunity for customized tenant improvements depending on sublease terms.

Strategic Market Positioning

- Located within a high-income catchment area, ensuring strong demand for medical, wellness, and professional services.
- Proximity to significant residential growth supports long-term tenant success and stability.
- Surrounded by a dense concentration of rooftops, creating a built-in client and patient base.
- Zoning: M2
- Headlease Expiry February 28th, 2027

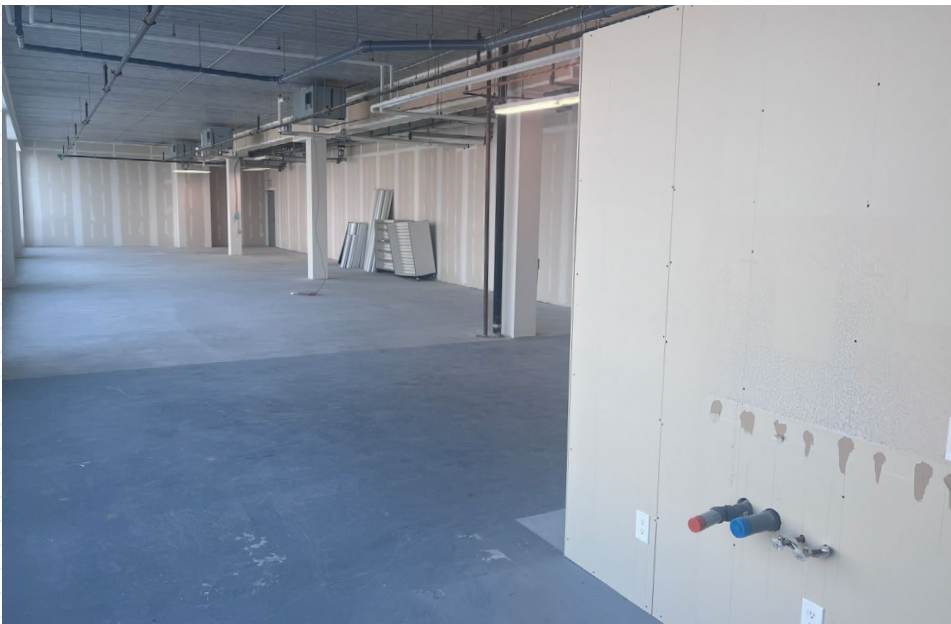


LEASE RATE: \$25.00 PSF

CAM & TAX: \$15.52 PSF (2026 EST.)

**plus management fee*

UNIT 206 PHOTOS



AMENITIES MAP





CONTACT

Ryan Munt
Executive Vice President

Ryan Munt Personal Real Estate Corporation

T 204 928 5015

C 204 298 1905

ryan.munt@cwstevenson.ca

Chris Macsymic
Executive Vice President & Principal

Chris Macsymic Personal Real Estate Corporation

T 204 928 5019

C 204 997 6547

chris.macsymic@cwstevenson.ca



Independently Owned and Operated / A Member of the Cushman & Wakefield Alliance ©2025 Cushman & Wakefield. All rights reserved. The information contained in this communication is strictly confidential. This information has been obtained from sources believed to be reliable but has not been verified. NO WARRANTY OR REPRESENTATION, EXPRESS OR IMPLIED, IS MADE AS TO THE CONDITION OF THE PROPERTY (OR PROPERTIES) REFERENCED HEREIN OR AS TO THE ACCURACY OR COMPLETENESS OF THE INFORMATION CONTAINED HEREIN, AND SAME IS SUBMITTED SUBJECT TO ERRORS, OMISSIONS, CHANGE OF PRICE, RENTAL OR OTHER CONDITIONS, WITHDRAWAL WITHOUT NOTICE, AND TO ANY SPECIAL LISTING CONDITIONS IMPOSED BY THE PROPERTY OWNER(S). ANY PROJECTIONS, OPINIONS OR ESTIMATES ARE SUBJECT TO UNCERTAINTY AND DO NOT SIGNIFY CURRENT OR FUTURE PROPERTY PERFORMANCE.