

# INDUSTRIAL BUILDING FOR SALE OR FOR LEASE

## 865 BRADFORD STREET



**Ryan Munt**  
**Executive Vice President**

Ryan Munt Personal Real Estate Corporation

T 204 928 5015

C 204 298 1905

[ryan.munt@cwstevenson.ca](mailto:ryan.munt@cwstevenson.ca)

 **CUSHMAN &  
WAKEFIELD**  
Winnipeg



# PROPERTY HIGHLIGHTS

**(+/-) 18,913 SF on 1.39 Acres**

- Rare opportunity to own or lease a single-tenant warehouse with existing office improvements in St. James Industrial
- Approximately (+/-) 14,908 SF of warehouse space and (+/-) 4,005 SF of office space featuring five private offices and showroom space
- (+/-) 16.5' ceiling
- Column spacing (+/-) 30' x 22.5'
- Covered dock level loading and ramped grade access
- Two dock doors, one 8' x 10' and one 10' x 10'
- One ramped grade door 14' wide x 10' tall
- Large loading area - 31% site coverage
- Easy access to trucking and distribution routes

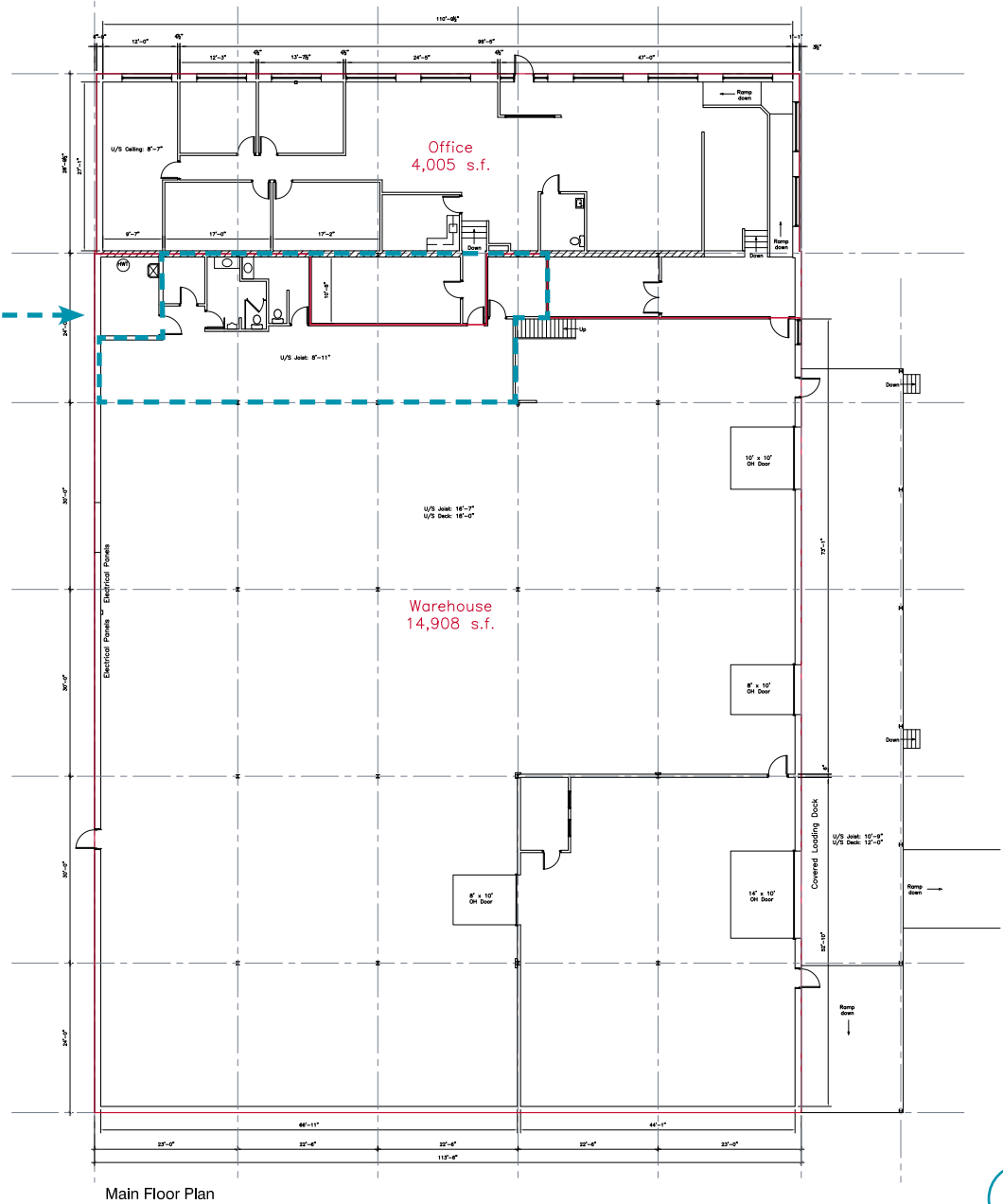
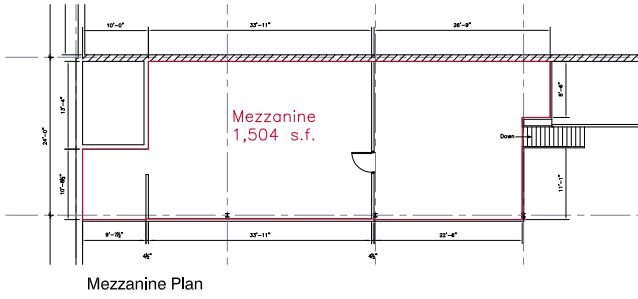
**SALE PRICE:** \$3,135,000    **PROPERTY TAXES:** \$45,504.74 (2025)

**LEASE RATE:** \$8.95 PSF    **LEASE CAM & TAX:** TBD





# AERIAL VIEW



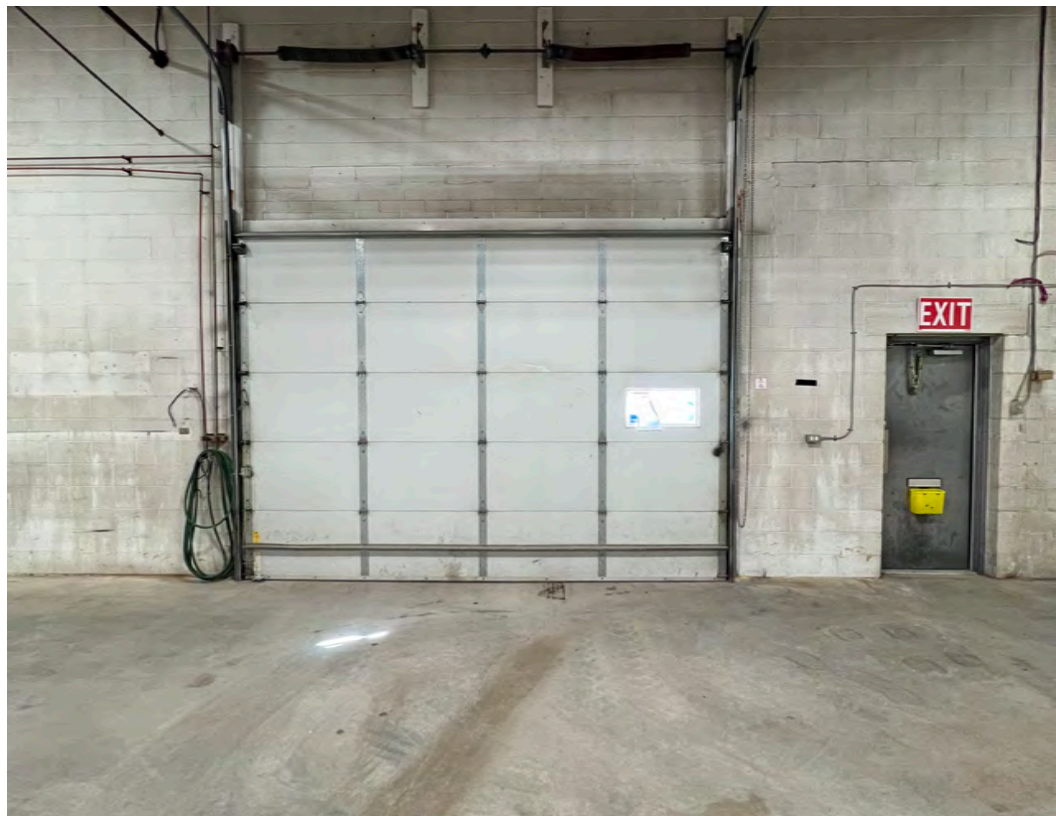
# FLOOR PLAN





# AREA AMENITIES

- |                                 |                                       |                      |
|---------------------------------|---------------------------------------|----------------------|
| 1. Costco Wholesale             | 11. Perimeter Aviation                | 21. Polo Park        |
| 2. Memory Express Computers     | 12. FedEx Ship Centre                 | 22. New York Burders |
| 3. Bison Transport              | 13. Purolator                         | 23. Marshall Fabrics |
| 4. Crazy 8 Billiards & Lounge   | 14. Royal Aviation Museum             | 24. A&W              |
| 5. Walmart Supercentre          | 15. Winnipeg Richardson Int'l Airport | 25. RRC Polytech     |
| 6. Value Village                | 16. Winners & HomeSense               |                      |
| 7. Staples                      | 17. The Home Depot                    |                      |
| 8. Planet Fitness               | 18. Montana's BBQ & Bar               |                      |
| 9. Speedworld Indoor Kart Track | 19. Rae & Jerry's Steak House         |                      |
| 10. Artists Emporium            | 20. Ye's Buffet                       |                      |







## CONTACT

**Ryan Munt**  
**Executive Vice President**

Ryan Munt Personal Real Estate Corporation

T 204 928 5015

C 204 298 1905

[ryan.munt@cwstevenson.ca](mailto:ryan.munt@cwstevenson.ca)



Independently Owned and Operated / A Member of the Cushman & Wakefield Alliance ©2026 Cushman & Wakefield. All rights reserved. The information contained in this communication is strictly confidential. This information has been obtained from sources believed to be reliable but has not been verified. NO WARRANTY OR REPRESENTATION, EXPRESS OR IMPLIED, IS MADE AS TO THE CONDITION OF THE PROPERTY (OR PROPERTIES) REFERENCED HEREIN OR AS TO THE ACCURACY OR COMPLETENESS OF THE INFORMATION CONTAINED HEREIN, AND SAME IS SUBMITTED SUBJECT TO ERRORS, OMISSIONS, CHANGE OF PRICE, RENTAL OR OTHER CONDITIONS, WITHDRAWAL WITHOUT NOTICE, AND TO ANY SPECIAL LISTING CONDITIONS IMPOSED BY THE PROPERTY OWNER(S). ANY PROJECTIONS, OPINIONS OR ESTIMATES ARE SUBJECT TO UNCERTAINTY AND DO NOT SIGNIFY CURRENT OR FUTURE PROPERTY PERFORMANCE.