

FOR LEASE

21 Murray Park Road

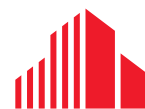
Up to 15,680 sf Build-to-Suit
Opportunity in Murray
Industrial Park

Chris Macsymic
Executive Vice President & Principal

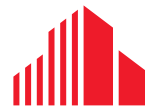
Chris Macsymic Personal Real Estate Corporation
T 204 928 5019
C 204 997 6547
chris.macsymic@cwinnipeg.com

Karin Thielmann
Senior Associate

T 204 934 6226
C 204 470 4715
karin.thielmann@cwinnipeg.com



**CUSHMAN &
WAKEFIELD**
Winnipeg



**CUSHMAN &
WAKEFIELD**
Winnipeg

INDUSTRIAL FOR LEASE

21 Murray Park Road



(+/-) 7,840 sf to 15,680 sf Available

PROPERTY HIGHLIGHTS

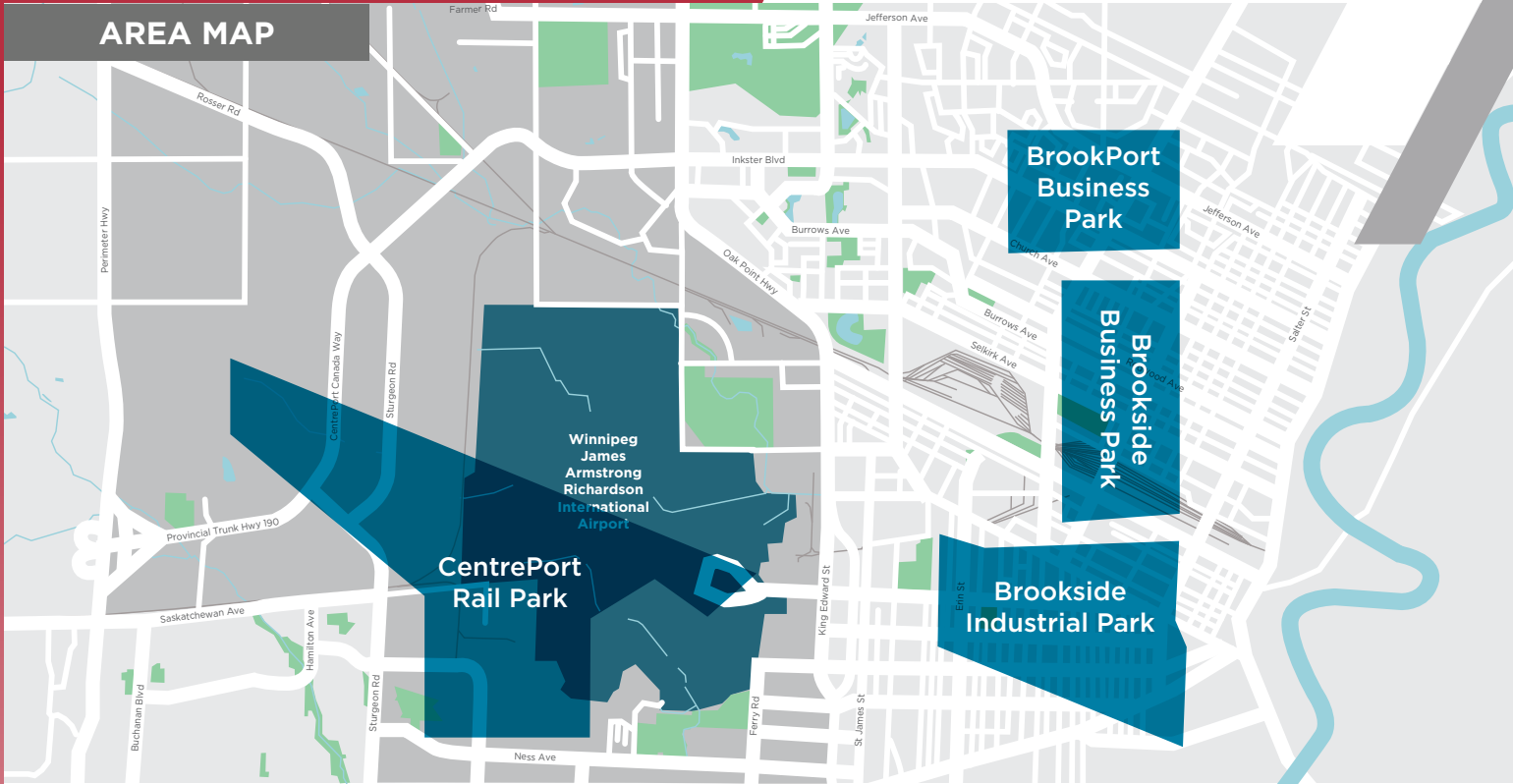
- Build-to-suit opportunity in the heart of Murray Industrial Park
- Located on Murray Park Road between Sturgeon Road and Moray Street
- Close proximity to Winnipeg Richardson International Airport and major transportation routes
- Six - 12' x 14' grade loading doors
- 24' clear ceiling height
- Zoned M2

Lease Rate: \$14.95 psf Net

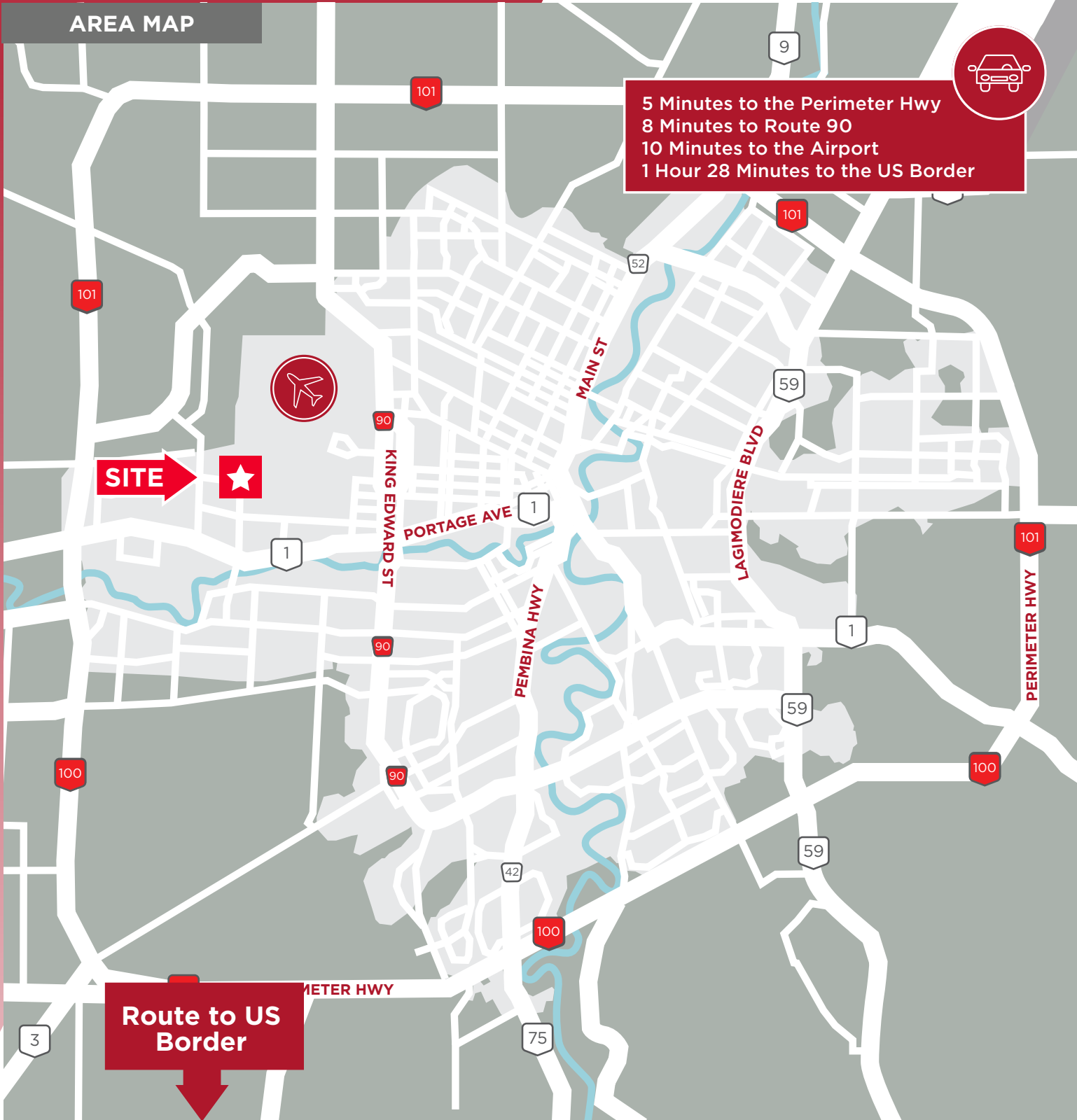
CAM & Tax: TBD



FOR LEASE
21 Murray Park Road



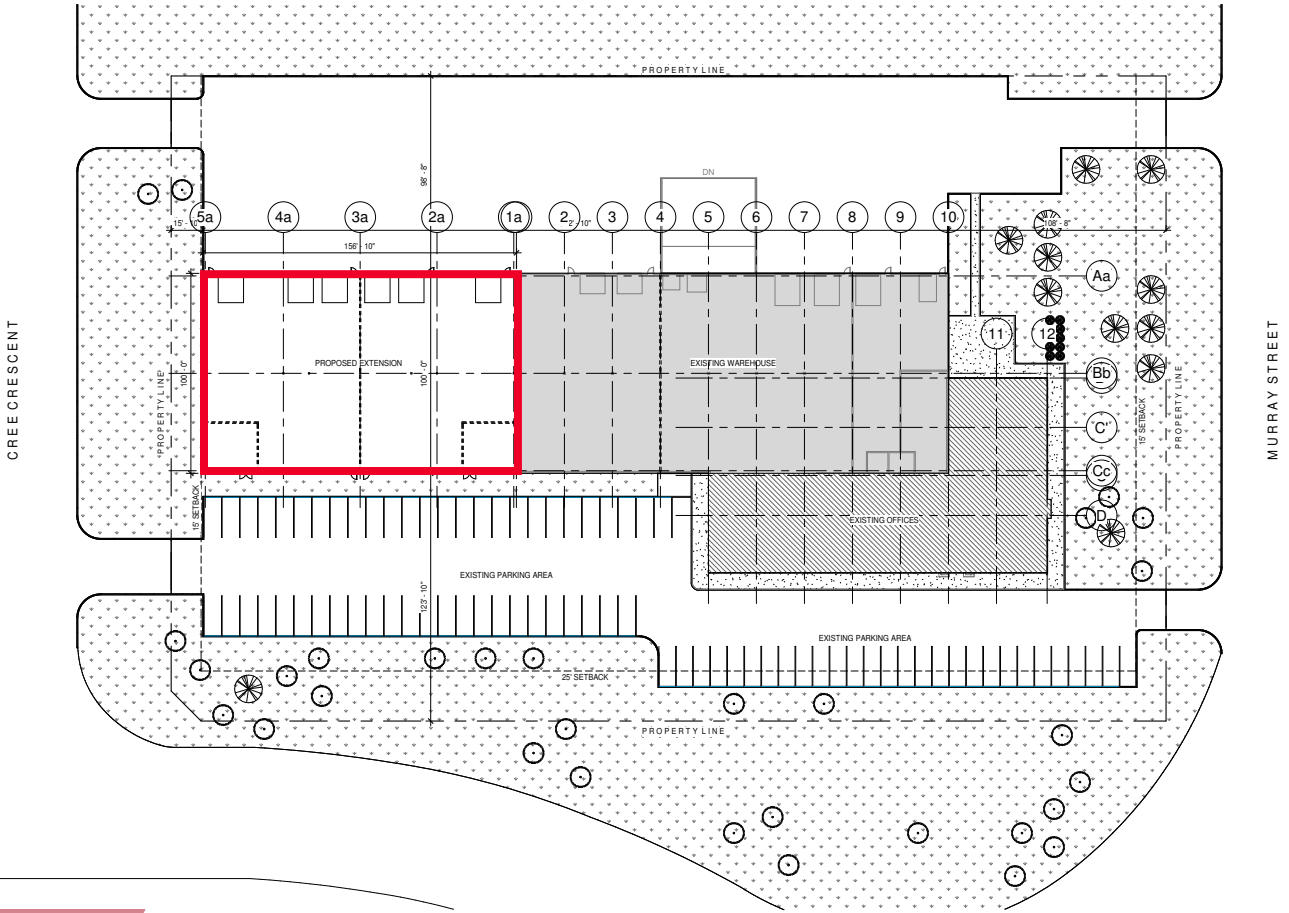
FOR LEASE
21 Murray Park Road



FOR LEASE
21 Murray Park Road



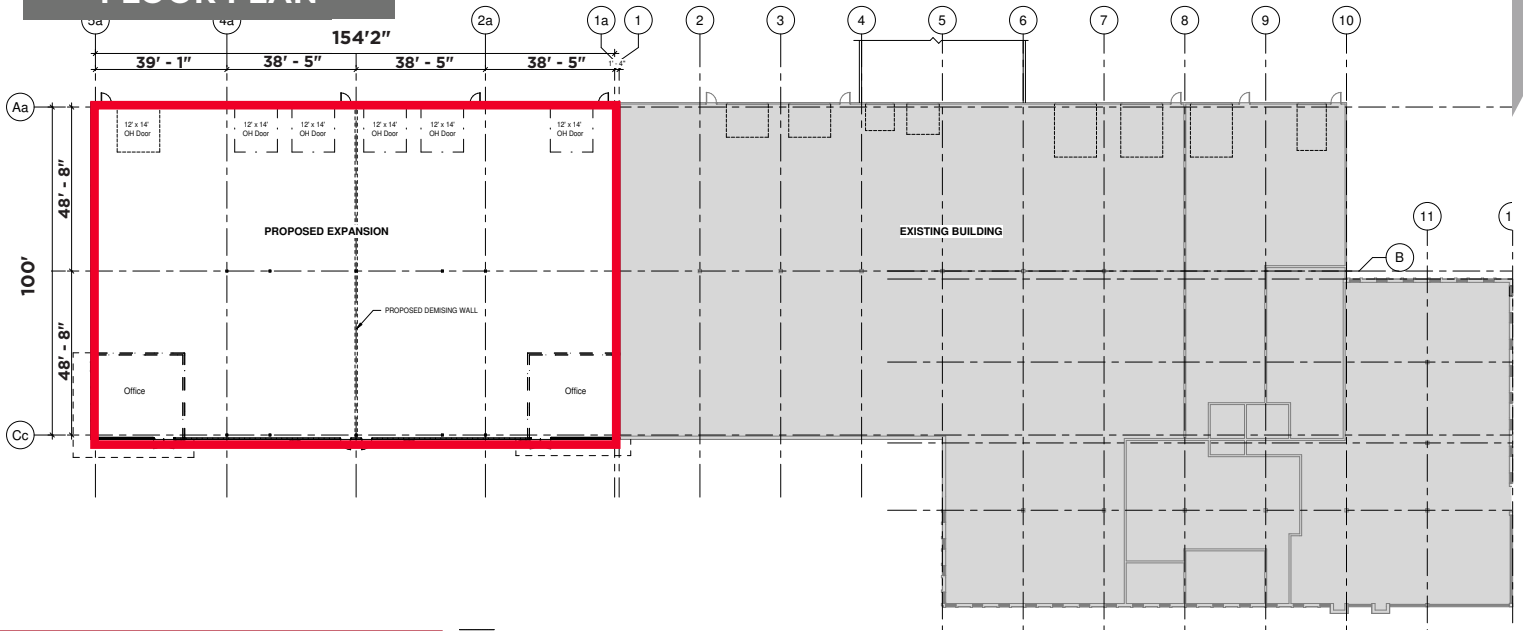
SITE PLAN



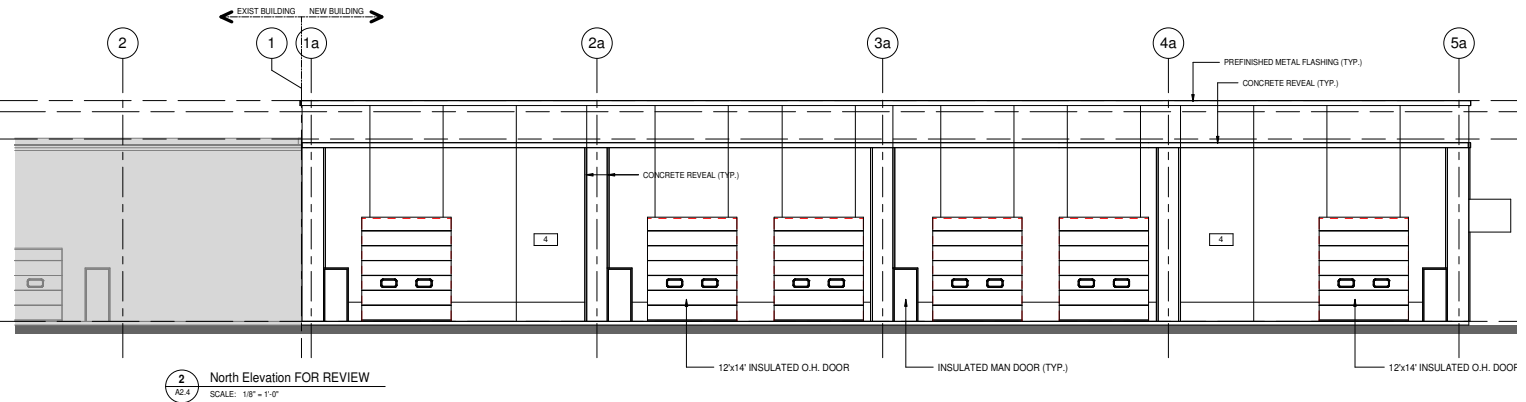
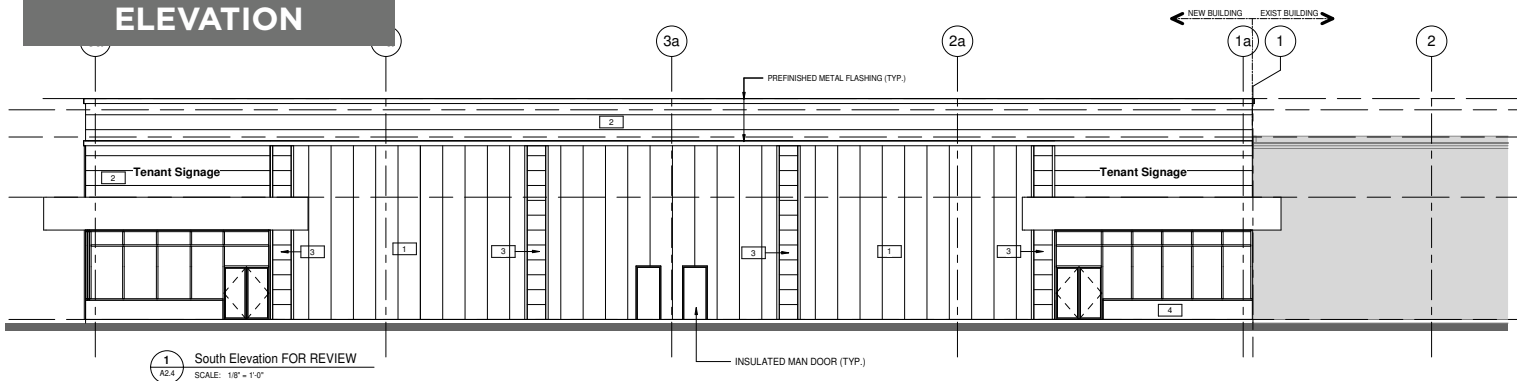
FOR LEASE 21 Murray Park Road



FLOOR PLAN



ELEVATION



Independently Owned and Operated / A Member of the Cushman & Wakefield Alliance ©2022 Cushman & Wakefield. All rights reserved.
The information contained in this communication is strictly confidential.

This information has been obtained from sources believed to be reliable but has not been verified. NO WARRANTY OR REPRESENTATION, EXPRESS OR IMPLIED, IS MADE AS TO THE CONDITION OF THE PROPERTY (OR PROPERTIES) REFERENCED HEREIN OR AS TO THE ACCURACY OR COMPLETENESS OF THE INFORMATION CONTAINED HEREIN, AND SAME IS SUBMITTED SUBJECT TO ERRORS, OMISSIONS, CHANGE OF PRICE, RENTAL OR OTHER CONDITIONS, WITHDRAWAL WITHOUT NOTICE, AND TO ANY SPECIAL LISTING CONDITIONS IMPOSED BY THE PROPERTY OWNER(S). ANY PROJECTIONS, OPINIONS OR ESTIMATES ARE SUBJECT TO UNCERTAINTY AND DO NOT SIGNIFY CURRENT OR FUTURE PROPERTY PERFORMANCE.

Chris Macsymic
Executive Vice President & Principal

Chris Macsymic Personal Real Estate Corporation

T 204 928 5019

C 204 997 6547

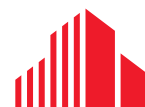
chris.macsymic@cwinnipeg.com

Karin Thielmann
Senior Associate

T 204 934 6226

C 204 470 4715

karin.thielmann@cwinnipeg.com



**CUSHMAN &
WAKEFIELD**
Winnipeg